

COMPARATIVE STUDIES ON PHYSICOCHEMICAL PROPERTIES OF *MORINDA CITRIFOLIA* GEL AND OINTMENT FORMULATIONS

PATAWEEKORN KETKOMOL*, TADSANEE PUNJANON

Department of Medical Science, Pharmacology and Toxicology Unit, Faculty of Science, Rangsit University, Pathum Thani 12000, Thailand.
Email: pataweekorn.k@rsu.ac.th

Received: 11 September 2019, Revised and Accepted: 03 October 2019

ABSTRACT

Objective: The objective of this study is comparing the physicochemical properties of *Morinda citrifolia* formulation in various conditions.**Methods:** Methanolic fruit extracts of *M. citrifolia* were used for the preparation of gel and ointment formulations that were evaluated for their phytochemicals, physicochemical, and stability at various conditions.**Results:** Phytochemical screening studies of *M. citrifolia* revealed the presence of bioactive. Furthermore, the evaluation of physical and chemical stability showed that gel formulation was more stable than ointment formulation.**Conclusion:** Gel formulation could become a media to be used for its medicinal properties.**Keywords:** Formulation, *Morinda citrifolia*, Phytochemicals, Scopoletin, Stability.© 2019 The Authors. Published by Innovare Academic Sciences Pvt Ltd. This is an open access article under the CC BY license (<http://creativecommons.org/licenses/by/4.0/>) DOI: <http://dx.doi.org/10.22159/ajpcr.2019.v12i11.35653>

INTRODUCTION

Herbal therapy has been used as traditional medicine as well as in alternative medicine practiced in developing countries. The widespread interest in drugs derived from plants is due to the belief that plants are safe and dependable with fewer side effects. Review of literature revealed that traditional plant drugs are beneficial for several skin-related problems and for wound healing [1-3]. Thailand has been promoting the use of traditional medicine because they are less expensive, easily obtained, and comprehensive, especially in developing countries [4]. Therefore, studies are searching for new drugs extracted from nature to be used for medicinal purposes which are less toxic and with no side effects, unlike chemical drugs. At present, people are more interested in the use of herbs for disease treatment or to be used as a health food supplement. Therefore, the government has made a policy to support research and development of herbal medicines to add value to herbal drug products and to reduce importing drugs from abroad. Furthermore, it is a career option for labor which leads to improving the economy.

Morinda citrifolia commonly known as "Noni" is a small tree native to Southeast Asia. It is also called as Indian Mulberry, Nono or Nonu, Cheese fruit, and Nhau in various cultures throughout the world. Components isolated from noni include scopoletin, octanoic acid, potassium, Vitamin C, terpenoids, alkaloids, anthraquinones, sitosterol, β -carotene, Vitamin A, flavone glycosides, and linoleic acid. The leaf contains flavanol glycosides, beta-carotene, and iridoid glycosides [5,6]. It is also reported to have a broad range of nutritional and therapeutic values for cancer, infection, arthritis, diabetes, asthma, hypertension, and pain. It also has muscle stimulatory and antihistamine effects along with antibacterial, antiviral, anti-tubercular, antitumor, anthelmintic, analgesic, hypotensive, and immunological effects. Noni has been used as a traditional remedy to treat broken bones, deep cuts, bruises, sores, and wound [7]. The fresh leaf is used for wounds treatment and as a poultice for broken bones in most parts of India [8]. Previous researches have shown that extracts from hexane ethanol and methanol of noni show wound healing capability by adding ligand binding to platelet-derived growth factor and A_{2A} receptors [9]. Previous researches showed 10% of topical *Morinda* ethanol extract gel had a significant effect on rat skin excisional

wound healing compared to 10% of povidone-iodine [10]. At the present, products from noni extract have various forms such as capsule, shampoo, soup, and supplement but topical form not a development that topical form, gel, or ointment, detailed information regarding its wound healing capability are not completely documented. The objective of the current study is comparative studies on the physicochemical properties of *M. citrifolia* gel and ointment formulations.

MATERIALS AND METHODS

Collection of plant material

Fruits of *M. citrifolia* were collected from Mahasarakham province, Thailand, in October 2018. The plant material was authenticated by associate researcher Nirun Vipunneun in the Department of Pharmacognosy, College of Pharmacy, Rangsit University. A voucher specimen was deposited in our laboratory. They were washed with distilled water, air dried, and then made to a fine powder with a mechanical grinder.

Extraction

About 1.6 kg of the powder sample was suspended in 9 L of methanol on a hot plate (30°C) for 24 h. After extraction, the sample was filtered using a fine muslin cloth followed by a filter paper (Whatman No. 1) and concentrated at 45°C using a rotary vacuum evaporator. The preliminary phytochemical screening was carried out by methanolic extract for the presence of phytoconstituents [11,12].

Phytochemical screening methods

Anthraquinone

The extract (10 g) was boiled with 20 ml of 1% hydrochloric acid and 3% hydrogen peroxide 2 ml for 15 min. The extract was filtered and then waited until cooled. The extract was added to dichloromethane 10 ml and ammonium hydroxide 3 ml. The pink color of the base layer indicated the presence of anthraquinone [13].

Cardiac glycosides

The extract (10 g) was boiled with 20 ml ethanol for 15 min. The mixture (5 ml) was placed in an evaporating dish and evaporated to dryness.

Then, 2% of 3,5-Dinitrobenzoic acid (Kedde reagent) (1 ml) and 1 M of potassium hydroxide (0.5 ml) were added. Purple color indicates the presence of cardiac [13].

Saponins

The extract (10 g) was boiled with 20 ml water for 15 min; the mixture was cooled and mixed vigorously and left for 3 min. The formation of frothing indicates the presence of saponins [13].

Coumarins

The extract (2 g) was put into two tubes and covered by filter paper coated with water and sodium hydroxide, respectively, and incubated into a water bath (37°C) for 5 min. Blue-green color on the filter paper coated with sodium hydroxide under ultraviolet (UV) light (366 nm) indicates the presence of coumarins [13].

Tannins

The extract (10 g) was boiled with 20 ml water for 15 min. Then, 1 ml of the solution was filtrate added to the 1 ml of 3% gelatin solution. Precipitation indicates the presence of tannins [13].

Flavonoids

The extract (10 g) was boiled with 20 ml ethanol for 15 min. Then, 1 ml of the solution was filtrate added to 1% ferric chloride. The green-black color indicates the presence of flavonoids [13].

Alkaloids

The extract (10 g) was boiled with 20 ml of 1% hydrochloric acid for 15 min. Then, 10 ml of the solution was added to 10 ml of the dichloromethane. The extract in dichloromethane layer (5 ml) was separated and added two drops of the alkaloid precipitating reagents. Precipitation of more than 70% indicates the presence of alkaloids [13].

Procedure for gel base and ointment base formulation preparation

Gel base formation

M. citrifolia fruit extract (10 g) was mixed with 1 g of Carbopol Ultrezin 50 ml of deionized water. Then, propylene glycol (1.5 g) and paraben (1.0 g) and triethanolamine (1.4 g) were added and mixed. The final volume was made up to 100 ml by adding remaining distilled water, also to obtain a gel at the required consistency [14,15]. Prepared gel was filled in a container and stored in a place avoiding light. The method described above and the formulae were tabulated in Table 1.

Ointment base formation

M. citrifolia fruit extract (10 g) and white petrolatum (90 g) were mixed (geometric dilution). The prepared ointment was filled in a container and protected from light. The method described above and the formulae were tabulated in Table 2.

Evaluation of physicochemical properties of gel and ointment formulations

Physical stability test

The physical stability test of the formulations was carried out for 36 days by measuring in the initial (0 days) and the 2nd time (36 days). At various temperature conditions (1) room temperature (25±2°C), (2) cold (4°C), and (3) heating-cooling cycle (kept in a hot oven at 45°C for 48 h and kept cold 4°C for 48 h) [16,17]. The physical stability of formulations was evaluated using physical parameters including physical appearance, color, odor, and homogeneity. All physical parameters were inspected through visual inspection.

Measurement of pH

The pH value of the prepared formulations was measured using a digital pH meter. The solution of gel and ointment was dissolved in 100 ml of distilled water and stored for 2 h. The pH measurement in

each formulation was done in triplicate and the average value was calculated.

Viscosity

The viscosity of gel and ointment formulations was measured using Brookfield Viscometer with the spindle. Using spindle number LV-64 at 100 rpm and the temperature was maintained at 25±2°C.

Chemical stability test

Chemical stability test used to detect scopoletin (standard reagent) of the formulations was carried out for 36 days by measuring at the initial day and 36 days after. At various temperature conditions including room temperature (25±2°C), cold (4°C), and heating-cooling cycle (kept in a hot oven at 45°C for 48 h and kept in cold temperature at 4°C for 48 h). The chemical stability of formulations was evaluated using high-performance liquid chromatography (HPLC) [18].

HPLC procedure

A Shimadzu LC-10 was used with a UV detector set at 283 nm having Eclipse XDB-C18 column (4.6 mm×150 mm; 5 µm I.D.). The mobile phase was a mixture of 0.1% phosphoric acid and acetonitrile (82:18) with a flow rate of 1.0 ml/min. The sample solution (20 µl at 35±1°C) was injected and the chromatogram was recorded. Peak area for each sample was measured and comparison was made between reference and sample solution peaks.

RESULTS

The objective of the current study is comparative studies on the physicochemical properties of *M. citrifolia* gel and ointment formulations.

Extraction of plant material

The simple method was used for the preparation of the extract. The percentage yield of methanolic extract of *M. citrifolia* was found to be 8.8%.

Determination of phytochemical screening

Phytochemical screening studies of *M. citrifolia* revealed the presence of anthraquinone, cardiac glycosides, coumarins, tannins, alkaloids,

Table 1: Gel base formulation (10%)

Name of the ingredient	Quantity (g)	Properties of ingredient
<i>Morinda citrifolia</i> extract	10.0	Active ingredient
Carbopol Ultrez®	1.0	Gelling agent
Propylene glycol	1.5	Humectant
Triethanolamine	1.4	pH adjusting agent
Paraben concentrate	1.0	Preservative
Deionized water	qs to 100.0	Vehicle

Table 2: Ointment base formulation (10%)

Name of the ingredient	Quantity (g)	Properties of ingredient
<i>Morinda citrifolia</i> extract	10.0	Active ingredient
White petrolatum	90.0	Ointment base

Table 3: Evaluation of phytochemical screening

No. plant constituents	Results
Anthraquinone	+
Cardiac glycosides	+
Saponin	-
Coumarins	+
Tannins	+
Phenols and flavonoids	+
Alkaloids	+

+: Present, -: Absent

Table 4: Physical evaluation of gel formulation





Physical evaluation	Initial	36 days after		
		25±2°C	4°C	Heating-cooling cycle
Gel formulation				
Physical appearance	Clear	Clear	Clear	Clear
Color	Light brown	Dark brown	Brown	Brown
Odor	Characteristic	Characteristic	Characteristic	Characteristic
Homogeneity	Good	Good	Good	Good
pH	5.42±0.09	5.87±0.14	5.91±0.15	5.89±0.21
Viscosity	11980.96±16.50	11830.56±19.43	12550.80±25.60	14150.30±21.30

Table 5: Physical evaluation of ointment formulation





Physical evaluation	Initial	36 days after		
		25±2°C	4°C	Heating-cooling cycle
Ointment formulation				
Physical appearance	Semi-solid	Semi-solid	Semi-solid	Semi-solid
Color	Light brown	Dark brown	Brown	Dark brown
Odor	Characteristic	Characteristic	Characteristic	Characteristic
Homogeneity	Good	Good	Good	Separate layer
pH	5.56±0.11	5.62±0.12	5.73±0.14	5.81±0.20
Viscosity	58980.21±75.68	59240.96±68.50	81940.72±85.27	Error

Table 6: Chemical evaluation of gel and ointment formulation

Formulations	Scopoletin (mg/100 g sample)			
	Initial	36 days after		
		25±2°C	4°C	Heating-cooling cycle
Gel formulation	16.38±0.56	15.46±0.19	15.81±0.09	12.87±0.22*
Ointment formulation	4.89±0.34*	2.58±0.06 [†]	3.55±0.06 [†]	0.90±0.02 [†]

*p<0.05 when compared to gel formulation on the initial day. [†]p<0.05 when compared to ointment formulation the initial day

phenols, and flavonoids which corresponds to previous research and shows that the extracted method of this researcher is reliable. The results obtained are summarized in Table 3.

Evaluation of topical gel and ointment

Physical evaluation

All physical parameters were inspected through visual inspection. Results showed that gel formulation was found only to be changed in color (other physical parameters did not change). However, ointment formulation was found to have a change in color in all of the conditions with a homogeneity change in heating-cooling cycle condition only. The results are shown in Tables 4 and 5.

Measurement of pH

pH of the gel and ointment was measured using digital pH meter. The gel and ointment formulations average value was about 5.77±0.15 and 5.68±0.14, respectively. The results are given in Tables 4 and 5.

Viscosity

The viscosities of gel and ointment formulations were determined using Brookfield Viscometer. Measuring with all temperature conditions after 36 days, viscosities in the gel formulation did not change, but it was increased in the ointment formulation at the heating-cooling cycle condition only. The viscosities of the formulations were reported in Tables 4 and 5.

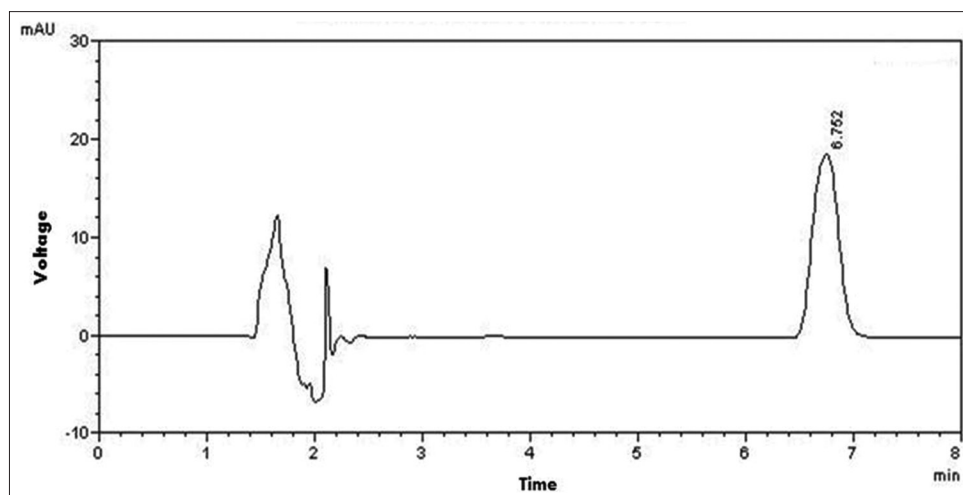


Fig. 1: Chromatogram on the initial day of scooletin (reference)

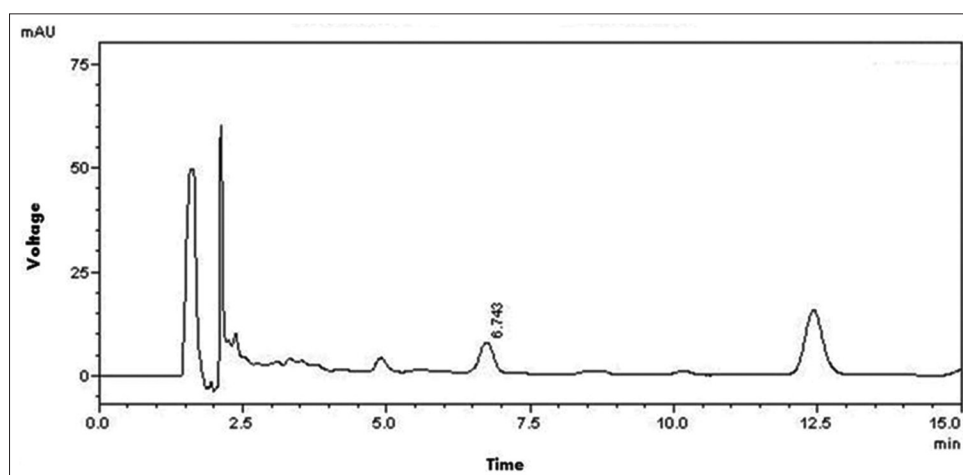


Fig. 2: Chromatogram on the initial day of gel formulation

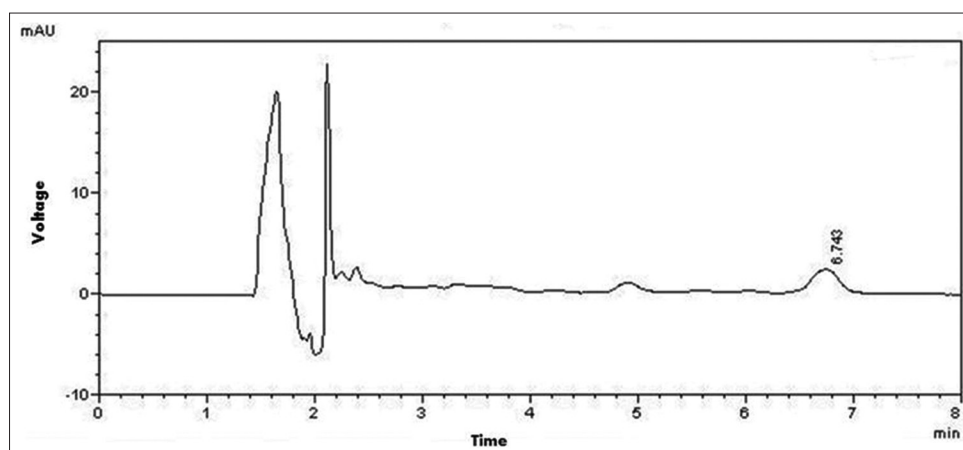


Fig. 3: Chromatogram on the initial day of ointment formulation

Chemical evaluation

The chemical stability of the formulations was evaluated by detecting and compared the amount of scooletin at various times and temperature conditions. Results show that on the initial day, scooletin in a gel formulation was found to be three folds higher than in ointment formulation. On day 36, scooletin in gel formulation decreased without significant compared to the initial day at both room and cold temperature,

while it had significant decrease in heating-cooling cycle conditions. Scooletin in the ointment formulation had a significant decrease in all tested conditions. The results are shown in Figs. 1-3 and Table 6.

DISCUSSION

M. citrifolia is a widely used herb and commonly found in Southeast Asian countries. It has been used in medicine for a long time. It has

